



Aquaread™

Multiparameter Water Quality Instruments

AM-200 Aquameter

Recording your water quality data and its GPS coordinates .

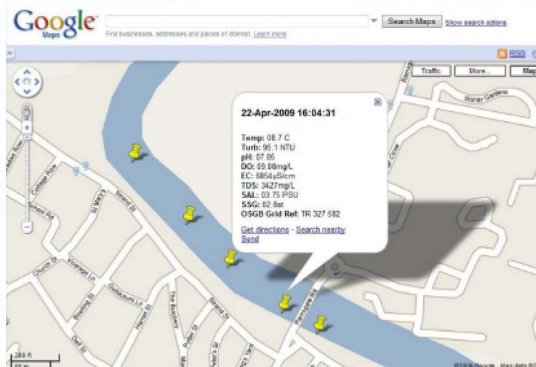
The AM-200 Aquameter is the world's most sophisticated, yet easy to use multiparameter water quality test system. No other equipment available today can match the AM-200 and associated Aquaprobes™ in either specification or value for money.

Features

- Built in GPS receiver enables location tagging with every dataset, view data in Google Earth
- Display of all the parameters being measured; scroll left and right to view
- Record your dataset at the touch of a single button, including all parameters,
- GPS data and calibration data
- Built in air pressure sensor for atmospheric compensation
- Ergonomic curved design sits nice in the hand, with rubber gasket for added grip in wet conditions
- Rugged, metal AquaConn connectors provide extreme durability where its needed most



AM-200 Aquameter can be used with both the AP-2000 and the AP-7000 Aquaprobes



Google Earth and Google Map images showing data locations

AP-2000 Aquaprobe

The portable multiparameter probe that gives you a choice! There are 3 simple choices to make to customise the probe. The probe comes with one ISE electrode socket and one optical electrode socket, plus you have the option to add a depth sensor.



3 Easy steps:

1. With or without Depth?
2. Which ISE electrode?
3. Which Optical electrode?

Standard Parameters: Optical DO, Specific EC, Absolute EC, pH, ORP, TDS, Resistivity, Salinity SSG and Temperature.

ISE Electrodes: Ammonium & Ammonia, Chloride, Fluoride, Nitrate, Calcium.

Optical Electrodes: Turbidity, Chlorophyll, Blue Green Algae, Rhodamine, Fluorescein, Refined Oil.

AP-7000 Aquaprobe

The AP-7000 takes long term deployment to the next level. It features a novel dual wiper system to clean ALL electrodes. It comes with a standard set of sensors plus 6 Aux ports to house any combination of Aquaread ISE or Optical sensors.

Standard Parameters: Optical DO, Specific EC, Absolute EC, pH, ORP, TDS, Resistivity, Salinity SSG, Depth and Temperature.

Plus 6 of the following sensor options in any combination:

ISE Electrodes:

Ammonium &
Ammonia,
Chloride,
Fluoride,
Nitrate,

Optical Electrodes:

Turbidity,
Chlorophyll,
Blue Green Algae,
Rhodamine,
Fluorescein,



Technical Specifications

Aquameter-200™

Dimensions (W x H x D)	90mm x 180mm x 39mm
Weight (including batteries)	450g
Display	80 character FSTN LCD with backlight
Data Memory	1900 full sets including GLP data
GPS Receiver	12 channel with integral antenna
GPS Accuracy	+/- 10m in all 3 dimensions
Atmospheric Pressure	150mb – 1150mb Accuracy +/- 1mb
Languages	English / French / German
PC Interface	USB (cable provided)
Power Supply	5 x AA cells. Alkaline or Ni-MH rechargeable
Battery Life Alkaline	> 20 hours. Ni-MH > 40 hours Alkaline
Operating Temperature	-20°C to +70°C
Protection Class	IP67

Probes General

Protection Class	IP68 (permanent immersion) Dimensions (L x Dia)
290mm x 42mm (11.4" x 1.65")	
Immersion Depth	Min 75mm (3"). Max 30m (98')
Weight (including cable)	725g (25.6oz)
Operating Temperature	-5°C – +50°C (23°F – 122°F)

AP-7000 / AP-2000 Standard Electrode Specification

Optical Dissolved Oxygen	Range	0 – 500.0% / 0 – 50.00 mg/L
	Resolution	0.1% / 0.01mg/L
	Accuracy	0 - 200%: ± 1% of reading. 200% - 500%: ± 10%
Depth	Range	0 – 100m
	Resolution	0.01m/F
	Accuracy	± 1%
Conductivity (EC)	Range	0 – 200 mS/cm (0 - 200,000 S/cm)
	Resolution	3 Auto-range scales: 0 – 9999 S/cm, 10.00 – 99.99 mS/cm, 100.0 – 200.0mS/cm
	Accuracy	± 1% of reading or ± 1 S/cm if greater
TDS*	Range	0 – 100,000 mg/L (ppm)
	Resolution	2 Auto-range scales: 0 – 9999mg/L, 10.00 – 100.00g/L
	Accuracy	± 1% of reading or ± 1mg/L if greater
Resistivity*	Range	5 Ω.cm– 1 M Ω .cm
	Resolution	2 Auto-range scales: 5 – 9999 Ω.cm, 10.0 – 1000.0 K Ω.cm
	Accuracy	± 1% of reading or ± 1 Ω.cm if greater

Salinity	Range	0 – 70 PSU / 0 – 70.00 ppt (g/Kg)
	Resolution	0.01 PSU / 0.01 ppt
	Accuracy	± 1% of reading or ± 0.1 unit if greater
Seawater Specific Gravity	Range	0 – 50 σt
	Resolution	0.1 σt
	Accuracy	± 1.0 σt
pH	Range	0 – 14 pH / ± 625mV
	Resolution	0.01 pH / ± 0.1mV
	Accuracy	± 0.01 pH / ± 5mV
ORP	Range	± 2000mV
	Resolution	0.1mV
	Accuracy	± 5mV
Temperature	Range	-5° C – +50° C
	Resolution	0.1° C
	Accuracy	± 0.5° C

* Readings calculated from EC and temperature electrode values

The accuracy figures quoted above represent the equipment's capability at the calibration points at 25°C. These figures do not take into account errors introduced by variations in the accuracy of calibration solutions and errors beyond the control of the manufacturer that may be introduced by environmental conditions in the field.

Optional AP-7000 / AP-2000 ISE Electrode Specification¹

Ammonium	Range	0 – 1,000mg/L (ppm)
	Resolution	2 Auto-range scales: 0.00 - 99.99 mg/L, 100.0 – 999.9 mg/L
	Accuracy	± 10% of reading
Ammonia†	Range	0 – 1,000mg/L (ppm)
	Resolution	2 Auto-range scales: 0.00 - 99.99 mg/L, 100.0 – 999.9 mg/L
	Accuracy	± 10% of reading
Chloride	Range	0 – 1,000mg/L (ppm)
	Resolution	2 Auto-range scales: 0.00 - 99.99 mg/L, 100.0 – 999.9 mg/L
	Accuracy	± 10% of reading

Flouride	Range	0 – 1,000mg/L (ppm)
	Resolution	2 Auto-range scales: 0.00 - 99.99 mg/L, 100.0 – 999.9 mg/L
	Accuracy	± 10% of reading
Nitrate	Range	0 – 1,000mg/L (ppm)
	Resolution	2 Auto-range scales: 0.00 - 99.99 mg/L, 100.0 – 999.9 mg/L
	Accuracy	± 10% of reading
Calcium	Range	0 – 1,000mg/L (ppm)
	Resolution	2 Auto-range scales: 0.00 - 99.99 mg/L, 100.0 – 999.9 mg/L
	Accuracy	± 10% of reading

†Ammonium electrode required. Readings calculated from ammonium, pH and temperature electrode values.

Optional AP-7000 / AP-2000 Optical Electrode Specification¹

Turbidity	Range	0 – 3000 NTU
	Resolution	2 Auto-range scales: 0.0 99.9 NTU, 100 – 3000 NTU
	Repeatability	± 2% of reading
Chlorophyll	Range	0 – 500 µg/L (ppb)
	Resolution	0.1 µg/L
	Repeatability	± 2% of reading
Phycocyanin (Freshwater Blue-Green Algae)	Range	0 – 300,000 cells/mL
	Resolution	0 – 300,000 cells/mL
	Repeatability	± 2% of reading
Phycocerythrin (Marine Blue-Green Algae)	Range	0 – 200,000 cells/mL
	Resolution	1 cell/mL
	Repeatability	± 2% of reading

Rhodamine WT Dye	Range	0 – 500 µg/L (ppb)
	Resolution	0.1 µg/L
	Accuracy	± 5% of reading
Fluorescein Dye	Range	0 – 500 µg/L (ppb)
	Resolution	0.1 µg/L
	Accuracy	± 5% of reading
Refined Oil	Range	0 – 10,000 µg/L (ppb))
	Resolution	0.1 µg/L
	Accuracy	± 2% of reading

¹ AP-7000: Choose up to 6 ISE Electrodes and Optical Electrodes in any combination
AP-2000: Choose 1 ISE Electrode and 1 Optical Electrode.