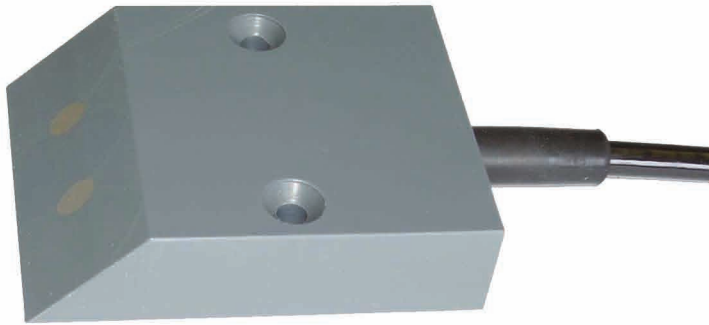




## Ponsel Liquid Level Actuator



**Robust, watertight, easy to install**

**Universal connection to dataloggers, samplers and remote systems**

**Information in the form of a dry polarised contact**

### **For qualitative follow-up of the storm overflows.**

The Ponsel Liquid Level Actuator provides overflow detection and delivers the information in the form of a dry polarised contact.

#### **Applications:**

- Qualitative follow up of stormwater overflows
- Qualitative follow up of wastewater network

The Ponsel level actuator consists of:

- 2 robust boxes: the detector part and an electronic cylindrical box.
- The sensor (PVC material) has 2 stainless electrodes. The sensor is easy to install thanks to 2 anchor points (2 M5x40 screws)

The 9 m cable is connected to the electronic box. The electronic cylindrical box is powered by an internal Lithium battery and has a ring in order to facilitate the installation.

Thanks to 2 independent cables (1 m) the sensor is able to be connected the following devices:

- Samplers,
- Dataloggers,
- Remote systems



## Technical Specifications

### Detector features

Level detection limit	0,5 mm
Material	PVC, stainless
Degree of protection	IP68
Operating temperature	0-50°C
Dimension (L x W x D mm)	20 x 80 x 60,5
Power supply	Internal battery
Câble	9 armoured connectors, polyurethane jacket, 9 meters connected to electronic box.

### Electronic box

Material	PVC
Degree of protection	IP68
Dimensions (H x diameter mm)	120 x 40
Power supply	Lithium battery
Cables	2 cables of 1 m. Bare wire (connectors are available in option).

