

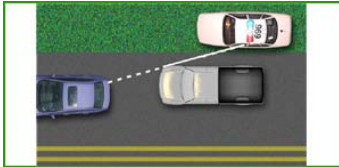


## SpeedLaser® Accessories

SpeedLaser® has plenty of upgrades and accessories to make your SpeedLaser® even more versatile.

*(NB Check compatibility of Accessories for your specific SpeedLaser model prior to ordering)*

### Internal Add Ons



**Following to Close™**



**Bluetooth Technology**

p/n ARB0 / ASB0

Allows for wireless data transfer between laser and mobile computers, cameras and other mobile devices.



**SD Memory Card Slot/USB Port**

p/n ARU0 / ASU0

Allows for data storage (with optional SD Memory Card) or transfer of data, photos or video.

### Viewing Attachments



**Video Camera**

p/n 5RV0

Attaches in front of the head-up display and provides standard video-out connector for connection to a recording device.



**8x Monocular Scope**

p/n 5MR0

User-installable, hinge-mounted scope to easily switch between magnified and regular head-up display views. For SpeedLaser® R.



**8x Monocular Scope**

p/n 5MS0

User-installable, snap-on scope to easily switch between magnified and regular head-up display views. For SpeedLaser® S.

### Carrying Cases



**Standard Hard Shell Case**

p/n 5PV0

Cushion fit for protection in transport used with SpeedLaser® systems.



**Heavy Duty Hard Case**

p/n 5PP0

Fitted case for Advantage™ or Profiler™ systems with pocket in lid for documents and accessories.



**Softside Carry Case**

p/n 5PC0

Nylon case with shoulder strap, includes four accessory pockets and velcro closure.



**Tripod Softside Carrying Case**

p/n 5PD0

Padded nylon softside carrying case with shoulder strap, handles and zipper closure.

## Chargers and Batteries



**Smart Charging Battery Station™**

p/n 5CS0

Charges two battery handles in two hours and stops when battery is fully charged to protect battery life - use in office or vehicle.



**12VDC Coil Cord**

p/n 5BT0

In-car battery charging cord, can be used to extend charge while system is in use.



**AC Wall Charger w/ Cord**

p/n 5CI0

Universal input 100 volts to 240 volts (50 to 60 Hz) wall plug. Charges Laser Atlanta rechargeable (5HT0) battery handles



**9V Wall Battery Charger**

p/n 5C90

Wall plug 9V charger charges 2 batteries simultaneously. For use with 9V Battery Handle (5H90). 2 high density 9V rechargeable batteries included with charger



**Premium Battery Handle**

p/n 5HT0

System battery handle provides connection for tripod mounting.



**Economy Battery Handle**

p/n 5H90

Handle that accepts customer supplied standard 9 volt batteries into the pistol grip battery handle. Can accept rechargeable 9V batteries. Not for use with a tripod; no data port.

## Cables and Data



**RS-232 Cable**

p/n 5BR0

Connects the SpeedLaser®/Mapping/ Diagramming system to a personal computer or other serial communications device. DB-9 serial connector to battery handle's 6pin circular connector.

## Conversions and Upgrades

### **Convert SpeedLaser® R to SpeedLaser® S**

p/n 9RS0

Converts system housing to an S style system.

### **Convert SpeedLaser® S to SpeedLaser® R**

p/n 9SR0

Converts system housing to an R style system.

## Services

### **Refurbish battery handle**

p/n 9H01

Upgrades older NiCAD batteries to Nickel Metal Hydride, as need. Replaces NiMH batteries, replaces any worn parts, complete cleaning and testing.

### **Clean and Check**

p/n SRC0

Complete cleaning and calibration of optical and electrical subsystems. Unit adjusted to factory specifications. Minor repairs while unit is disassembled.

### **Annual Calibration Certification**

p/n S0AS

Performs recertification of SpeedLaser®. If system is out of calibration the service should be changed to a Clean and Check.

## Tripods



**Standard Tripod**

p/n 5TB0

(Requires tripod battery handle)

Three telescoping legs each in three sections. 360 degree rotating swivel head.



**Horizontal Encoding Tripod**

p/n 5TH0

Collapsible tripod with built-in 8,000 count encoder - 0.1 degree bearing accuracy. Used for Accident Mapping System.